

Meet the Area Development Officers (ADOs)

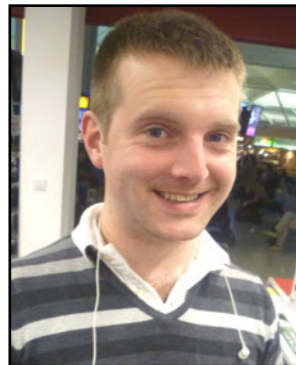
Gloucestershire: Edward Keating

Edward trained as a journalist before pursuing a career in PR and marketing. He has been a parish councillor, unitary councillor (including being deputy group leader) and sat on the South West Regional Assembly. He covers all six Gloucestershire constituencies assisting in training of activists and membership recruitment.



Wiltshire, BaNES and Swindon: Tom Stubbs

Tom has been on the NUS National Executive Committee, worked as the Constituency Organiser in Truro and Falmouth, been a candidate for Cornwall Council in 2009 (losing only by 40) and is a serving City Councillor for Truro Trehaverne.



Dorset: Kelly Bloomfield

Kelly joined Jeremy Browne's campaign team in the run up to the 2010 General Election and after a baptism of fire – she took on the 2011 Taunton Deane Borough Council campaign where we held most of our seats and gained some new ones. Her new role as ADO covers Dorset, Bournemouth and Poole.



Democracy on the beat

Next May the whole country will be electing police and crime commissioners for the first time and the Western Counties region offers us the best chances of success. Anyone interested in standing should contact the Chair of the Regional Candidates Committee, Neil Halsall, on neil.halsall@southglos.gov.uk.

Behind the scenes in Brussels

Sir Graham Watson MEP will be hosting a sponsored visit to the European Parliament in Brussels on 12-13 October.

Places will be allocated on a first come first served basis. For more information, please contact Jon Gleeson - email: casework4@grahamwatsonmep.org, tel: **01458 252265**.

Building Liberal Youth

Any members who know of liberal-leaning young people at university or college in the West Country should put them in touch with Western Counties Regional Youth Spokesperson, Sean Davey on **07545 644999** or at sean.davey@cotswoldslibdems.org.uk.



Arise, Sir Graham - Congratulations to Sir Graham Watson MEP who was knighted in the Queen's Birthday Honours. Typically modest Sir Graham said the award was for the "region."



Tying the knot - Warm wishes to Duncan Hames MP (Chippenham) and Jo Swinson MP (East Dunbartonshire) who were married recently in Glasgow.

Moving forward in Bristol...

Group leader **BARBARA JANKE** says one of her priorities will be maintaining her city's place as the UK's green capital.

Bristol is still led by Lib Dems and a Lib Dem agenda, green and forward-thinking, even though we lost five seats (out of 12 defended) at the May elections, just forfeiting the majority we gained for the first time in 2009.

It's no surprise, surely, that our first, second and third priorities will be the budgets for next year and beyond.

We pledged two years ago, when we first started looking at the likelihood of cutbacks after the 2010 general election, that we would protect services and the interests of the most vulnerable in our society would be our first concern.

These were our guides and benchmarks last year, when we managed to slash £28m from our revenue budget – including £6m only announced just before Christmas. And they will be our watchwords once again, as we start to plan the new round of savings.

Last year we innovated by launching a major "conversation" with the public – involving many thousands of responses – about where they felt the axe should fall. This was very worthwhile and we will be repeating this exercise, too, this time round.

But, as I say, this is a green and forward-thinking administration, too.

...And in Bath

This has been a challenging and exciting time for the Liberal Democrats on Bath and North East Somerset Council. Since going into minority control two months ago, the new administration has taken steps to deliver key manifesto policies including saving a local school and revising the Bath transport package, writes **PAUL CROSSLEY**.

In doing so, we have shown one of the key differences between us and the unpopular, preceding Conservative administration: we listen to the views of local people while they did not.

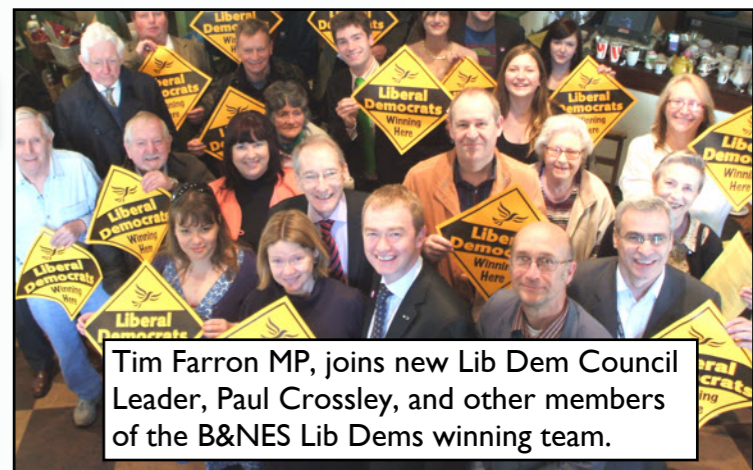
We intend to reshape B&NES into a listening Council, which responds to the community. This reflects a successful, local campaigning style which is focused on really listening to local residents, getting involved in



Barbara Janke, together with the other members of Bristol City Council's new Lib Dem Cabinet.

As well as continuing the process of encouraging more elderly people in need of care to remain as long as possible in their own homes, we are also insulating thousands of family homes across Bristol, relentlessly improving our waste reduction and recycling services and installing smart meters in people's homes and wi-fi hotspots on the streets of our city.

As well as continuing to tackle the seemingly intractable (without more help from the government) problem of shortage of reception class places in our schools, we are also continuing with our hydrogen ferry trial project in the harbour and campaigning wherever we can against threats to our environment and our reputation as the UK's sole Green Capital.



Tim Farron MP, joins new Lib Dem Council Leader, Paul Crossley, and other members of the B&NES Lib Dems winning team.

community campaigns and emphasising the key differences between the Liberal Democrats and our Conservative opponents.

Starting early has also been a vital part of the campaign with planning and hard work beginning years before election day. "Working all year round – not just at election time" is a reality for us, not just a slogan.